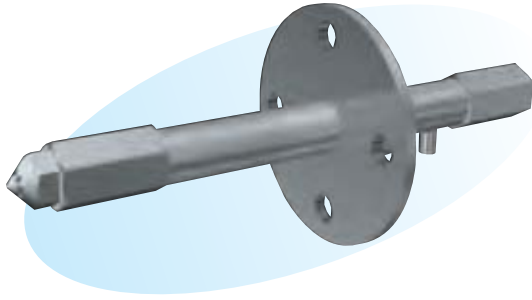


## KAM Nozzle KAMX (High-capacity) type



### ► Features

- Light weight and compact design.
- Spray angle capacity from 40° to 80°.

### ► Applications

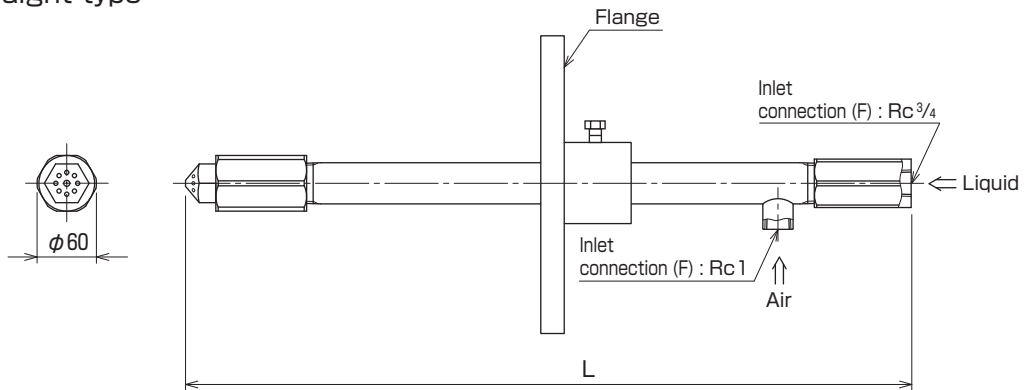
- Exhaust gas cooling in waste incineration plants and desuperheating tower.

### ► Material

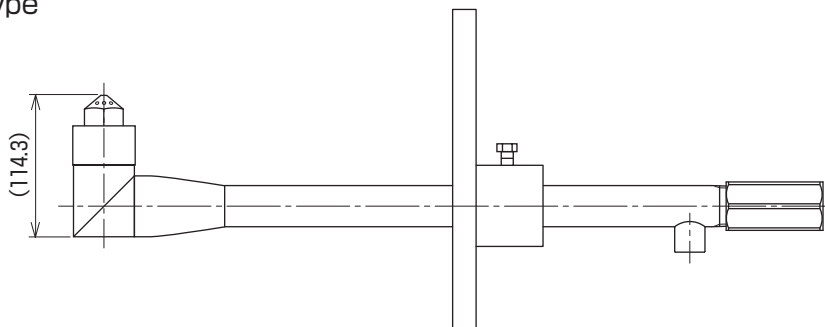
- Principal parts : 316L Stainless steel
- Other materials available upon request.

### Shapes and dimensions

#### ● Straight type



#### ● Elbow type



- \* NPT thread is also available.
- \* Dimension L and flange size are to be specified by the customer.

#### ● Model and Model Number representing

KAMX 2300  
Model number

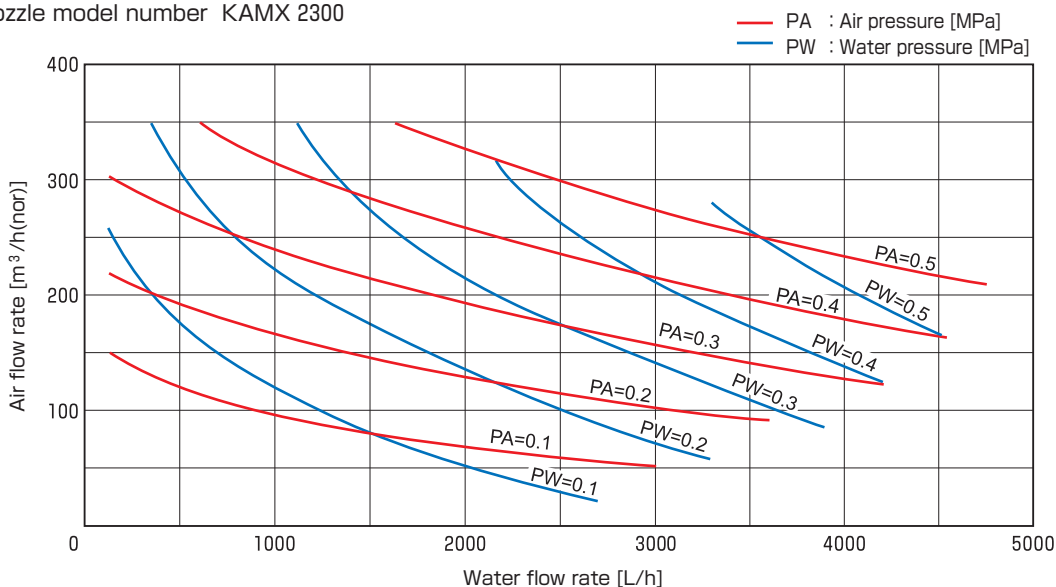
● Standard type model number list

Model	Model number	Min. orifice diameter for liquid [mm]	Air-water volume ratio	Water flow rate [L/h] at following water pressure [MPa]			
				0.2	0.3	0.4	0.5
KAMX	1600	4.0	100	1200	1500	1830	2220
			150	930	1200	1500	1800
			200	780	1020	1260	—
	2300	4.5	10	3720	4620	5400	6050
			30	2820	3540	4200	4800
			50	2280	2940	3480	—

● Performance data

Characteristic curves

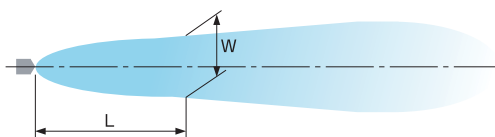
Nozzle model number KAMX 2300



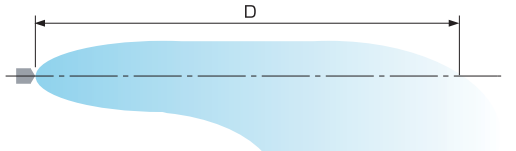
Spray patterns

Nozzle model number KAMX 2300

(Widthwise, view from the top)



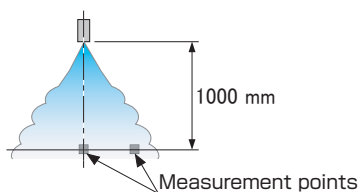
(Thicknesswise, view from the side)



Air flow rate [m³/h (nor)]	Water flow rate [L/h]	Air-water volume ratio	Spray pattern value [mm]		
			D	L	W
276	2300	120	8000	500	400
				1000	600
				2000	900
				3000	1300

Particle size and velocity

Nozzle model number KAMX 2300



Air pressure [MPa]	Water pressure [MPa]	Air flow rate [m³/h (nor)]	Water flow rate [L/h]	Air-water volume ratio	Sauter mean diameter [μm]		Mean particle velocity [m/s]	
					Center	Periphery	Center	Periphery
0.45	0.39	276	2300	120	67.6	66.7	41.5	20.2