



Hollow Cone Nozzle DAFF

Specification

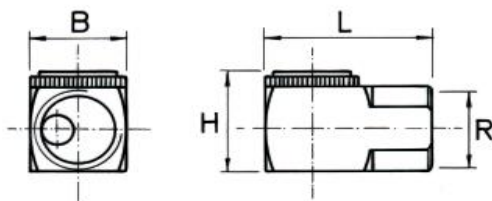
- Hollow cone with fine atomisation and wide spray angle
- Tangential construction
- No internal parts, therefore clog resistant
- BSPP female thread only.
- Materials: : Brass, 1.4305 (303), 1.4404 (316)
- Other materials and spray angles upon request
- NPT-threads upon request



Technical Data

Size	Thread						Equiv. Diameter [mm]		Flow Rate [l/min] at Pressure [bar]							Spray Angle [°] at Pressure [bar]
	1/8	1/4	3/8	1/2	3/4	1	Exit	Entry	1	2	3	4	5	6	7	
2	X	X					1,7	1,6	0,46	0,64	0,79	0,91	1,00	1,10	1,20	100
4	X	X					2,5	2,2	0,92	1,30	1,60	1,80	2,00	2,20	2,40	100
5	X	X					2,5	2,6	1,10	1,60	2,00	2,30	2,50	2,80	3,00	100
6	X	X					2,5	3,1	1,30	1,90	2,40	2,70	3,10	3,40	3,60	100
10	X	X					3,4	3,8	2,30	3,20	3,90	4,60	5,10	5,60	6,00	100
15	X	X	X				5,6	3,5	3,40	4,80	5,90	6,80	7,60	8,40	9,00	100
20			X				6,4	4,3	4,50	6,40	7,90	9,10	10,20	11,20	12,10	100
25			X				6,9	4,7	5,70	8,10	9,90	11,40	12,70	14,00	15,10	110
30			X				7,5	5,1	6,90	9,70	11,80	13,70	15,30	16,80	18,10	110
50				X			7,5	6,5	9,00	16,10	19,70	22,80	26,50	27,90	30,20	115
80				X			9,9	7,5	18,20	25,80	31,60	36,50	40,80	44,70	48,20	115
100				X	X		11,1	8,4	22,80	32,20	39,50	45,60	51,00	55,80	60,30	115
150					X	X	14,3	10,5	34,20	48,30	59,20	68,40	76,40	83,70	90,50	115
200						X	18,0	11,0	45,60	64,50	79,00	91,20	102,00	112,00	121,00	120
250						X	19,5	14,0	57,00	80,70	98,80	114,00	128,00	140,00	151,00	120

Geometry



R	Dimensions in mm		
	L	H	B
1/8	28	21	16
1/4	28	21	16
3/8	32	26	20
1/2	41	31	25
3/4	46	36	30
1	58	42	35

Order Example

Hollow Cone Thread DAFF Size - Material

Hollow Cone 1/4 DAFF 4 Brass